

TIMELINE IMAGES to be cut out and pasted onto Timeline Activity Sheet



Possibly about 1908

Walter Burley Griffin at work.
From Collection of National Archives of Australia:A1200,L32618



1911 Federal Capital Competition View from Summit of Mount Ainslee. Drawing in ink, watercolour and gouache on linen, one of many produced by Marion Mahony Griffin for the competition entry. From the Collection of National Archives of Australia: A710,49



Possibly about 1909 Federal Capital Site, part of panorama, National Library of Australia, in Federal Capital Site Album, © all rights reserved.



23 May 1912 Government House Ballroom, Melbourne where the entries are judged and the Griffins' entry wins. National Library of Australia PIC 8138/1



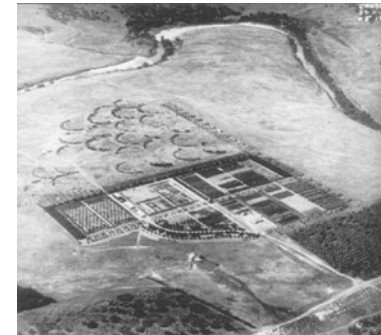
1913 Naming of the city of Canberra, Capital Hill. Public domain (Source: wikipedia.org)



Early 1923 Telopea Park school in Canberra shortly after the school was opened. Public domain (Source: wikipedia.org)



Possibly about 1900 Marion Mahony Griffin seated. Mitchell Library, State Library of New South Wales, Miles Franklin papers ref.PX*D 250/3 43



27 Nov 1923 Yarralumla nursery, Canberra from the air. Public domain (Source: wikipedia.org)



Possibly about 1906 Senators at Tumut looking at suitable sites for the capital. Photographer E.T.Luke. Public domain (Source: wikipedia.org)



Circa 1910 Surveyors camp, Canberra. Public domain (Source: wikipedia.org - Frank H. Bolland collection, National Library of Australia)

